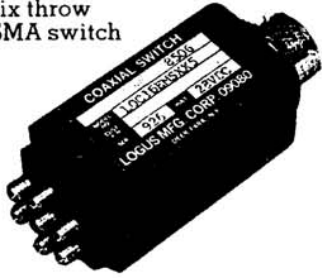


# COAXIAL SWITCHES

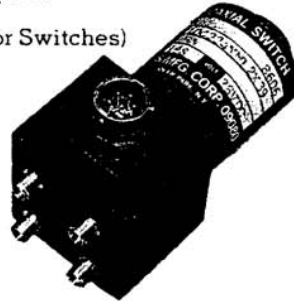
single pole,  
six throw  
SMA switch



dual waveguide  
coaxial switch



DC-18 GHz  
coaxial switch  
(specs typical  
for SMA  
Connector Switches)



Frequency (GHz)	VSWR (Max)	Insertion Loss (dB Max)	Isolation (dB)
DC-1	1.05:1	.05	80
1-2	1.10	.1	70
2-8.4	1.20	.25	60
8.4-14.0	1.25	.35/.4	60
14.0-18	1.33	.5	60

custom  
designed



double pole  
double throw  
type N switch





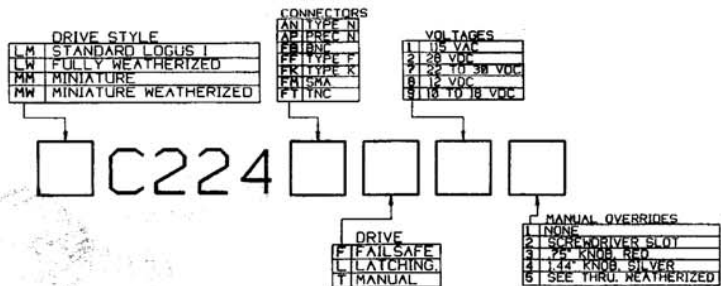
# C224 SERIES

Baseball style coaxial switches w/manual override.

When manual override is a desired characteristic, the LOGUS C224 product line of coaxial switches is the right choice from DC - 40 GHz.

The patented LOGUS I DRIVE powers a series of Broadband coaxial RF's creating a package unsurpassed in the industry.

The following pages comprise a variety of sample models commonly used in SATCOM and CELLULAR applications.



REVISIONS				
EDN	LTR	DESCRIPTION	DATE	APPROVED

FREQUENCY	VSWR-MAX.	INSERTION LOSS MAX.	ISOLATION MIN.
0-1.0 GHz	< 1.05	< .05	80 db
1.0-2.0 GHz	1.10	.1	70 db
2.0-6.5 GHz	1.20	.25	60 db
6.5-8.4 GHz	1.20	.25	60 db
8.4-11.0 GHz	1.25	.35/ .40	60 db
11.0-14.0 GHz	1.25	.40	60 db
14.0-18.0 GHz	1.33	.50	60 db

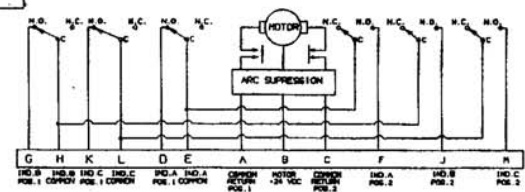
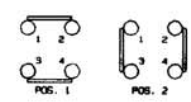
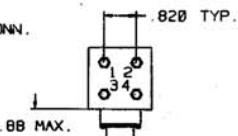
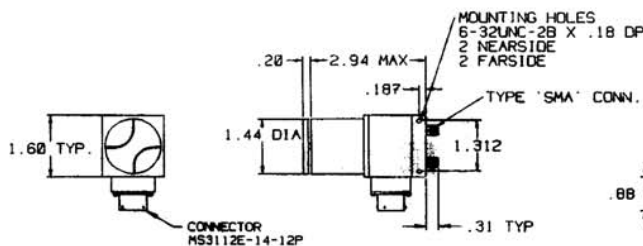
  

<b>SPECIFICATIONS:</b> <b>ELECTRICAL:</b> POWER 50 WCH RF IMPEDANCE 50 OHMS SWITCHING TIME MAX. 50 MS CONTACTS BREAK BEFORE MAKE VOLTAGE 28 VDC + OR - 10% CURRENT 1.0 AMP MAX. @ 28 DEG. C.	<b>MECHANICAL:</b> MATERIAL ALUMINUM (RF ASSY.) CONN. SHELL CRES. FINISH IRIDITE PER MIL-C-5541 PAINT DULL BLACK ENAMEL LIFE 1,000,000 CYCLES	<b>ENVIRONMENTAL:</b> TEMPERATURE OPERATIVE -10C TO +71C NON-OPERATIVE -55C TO +100C HUMIDITY 0-95% NO CONDENSATION SHOCK 15 Gs MIN. FOR 11 MS. VIBRATION 55-500 Hz AT 5 Gs
---	---	--

MODEL # LMC224FML23 DRAWN 8/18/95 LLS CHECKED 8/18/95 M E APPROVED APPROVED MATERIAL	COAXIAL SWITCH, DPDT. .0820" TYPE "SMA" LATCHING, 28 VDC, KNOB	B 09080 B 6816-1 SCALE UNIT WT SHEET 1 OF 1
---	--	--

1 MC224FMI 23



SCHEMATIC DIAGRAM-LATCHING SHOWN IN POSITION 1

**SPECIFICATIONS:**

**ELECTRICAL:**  
 POWER 100 W  
 RF IMPEDANCE 50 OHMS  
 SWITCHING TIME MAX. 60 MS  
 BREAK BEFORE MAKE 24 VDC + OR - 10%  
 VOLTAGE 1.5 AMPS MAX. @ 20 DEG. C.  
 CURRENT

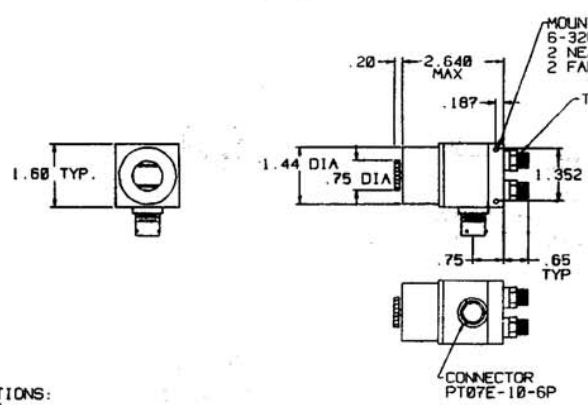
**MECHANICAL:**  
 MATERIAL ALUMINUM (RF ASSY.) CONN. SHELL CRES.  
 FINISH IRIDIUM PER MIL-C-5541  
 PAINT DULL BLACK ENAMEL  
 LIFE 1,000,000 CYCLES

**ENVIRONMENTAL:**  
 TEMPERATURE OPERATIVE -10C TO +71C  
 NON-OPERATIVE -55C TO +100C  
 HUMIDITY 0-95% NO CONDENSATION  
 SHOCK 15 G MIN. FOR 11 MS.  
 VIBRATION 55-500 Hz AT 5 G

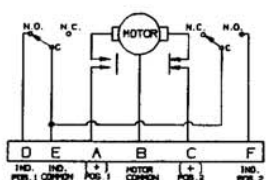
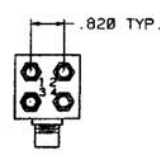
FREQUENCY	VSWR-MAX.	INSERTION LOSS MAX.	ISOLATION MIN.
0-1.0 GHz	< 1.05	< .05	80 db
1.0-2.0 GHz	1.10	.10	70 db
2.0-6.5 GHz	1.20	.25	60 db
6.5-8.4 GHz	1.20	.25	60 db
8.4-11.0 GHz	1.25	.35/.40	60 db
11.0-14.0 GHz	1.25	.40	60 db
14.0-18.0 GHz	1.33	.50	60 db

TOLERANCES UNLESS OTHERWISE SPECIFIED DIMENSIONS ARE IN INCHES		MODEL # LMC224FML7C4	
DECIMAL FRACTIONS	DRAWN 9/11/95 J.L.Z.	CHECKED	
PLACES: .010 - 1/64	APPROVED	APPROVED	
PLACES: .001 - 1/32	APPROVED	APPROVED	
ANGLES: 1/2 DEG.	MATERIAL:	FINISH:	COAXIAL SWITCH, DPDT, TYPE "SMA", LATCHING, 3 SETS INDICATORS, KNOB B 09080 B 9842-1 SCALE UNIT WT SHEET OF
NEXT ASSY	USED ON	APPLICATION	

REV	DESCRIPTION	DATE	APPROVED



TYPE "F" CONN. FEMALE



SCHEMATIC DIAGRAM-LATCHING SHOWN IN POSITION 1

**SPECIFICATIONS:**

**ELECTRICAL:**  
 POWER 100 W  
 RF IMPEDANCE 50 OHMS  
 SWITCHING TIME MAX. 60 MS  
 BREAK BEFORE MAKE 28 VDC + OR - 10%  
 VOLTAGE 1.0 AMP MAX. @ 20 DEG. C.  
 CURRENT

**MECHANICAL:**  
 MATERIAL ALUMINUM (RF ASSY.) CONN. SHELL CRES.  
 FINISH IRIDIUM PER MIL-C-5541  
 PAINT DULL BLACK ENAMEL  
 LIFE 1,000,000 CYCLES

**ENVIRONMENTAL:**  
 TEMPERATURE OPERATIVE -10C TO +71C  
 NON-OPERATIVE -55C TO +100C  
 HUMIDITY 0-95% NO CONDENSATION  
 SHOCK 15 G MIN. FOR 11 MS.  
 VIBRATION 55-500 Hz AT 5 G

FREQUENCY	VSWR-MAX.	INSERTION LOSS MAX.	ISOLATION MIN.
.75-2.0 GHz	1.15:1	.10	80 db

TOLERANCES UNLESS OTHERWISE SPECIFIED DIMENSIONS ARE IN INCHES		MODEL # LMC224FFL23	
DECIMAL FRACTIONS	DRAWN 4/11/95 J.L.Z.	CHECKED	
PLACES: .010 - 1/64	APPROVED	APPROVED	
PLACES: .001 - 1/32	APPROVED	APPROVED	
ANGLES: 1/2 DEG.	MATERIAL:	FINISH:	SWITCH, COAXIAL, 2P2T, .0.820", TYPE "F", LATCHING, 28 VDC, KNOB 09080 B 9590-1 SCALE NONE UNIT WT SHEET OF 1
NEXT ASSY	USED ON	APPLICATION	