

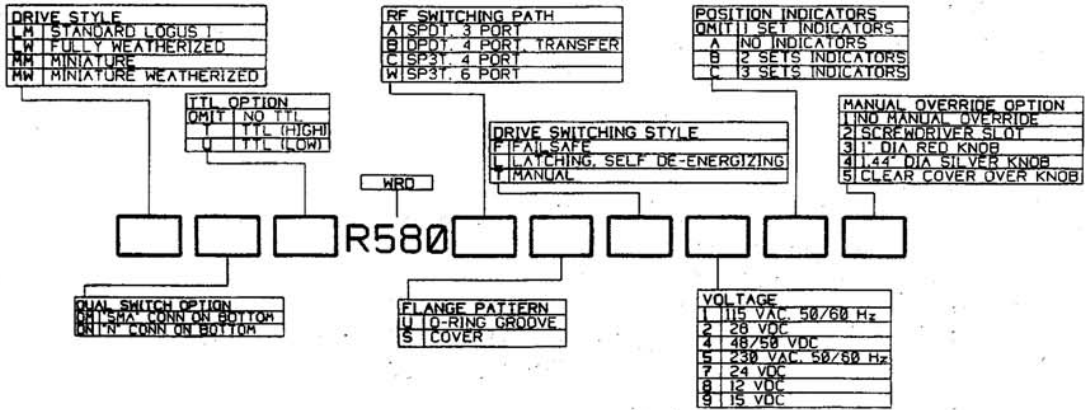
TRI - BAND

C-BAND
5.8 GHz - 6.4 GHz

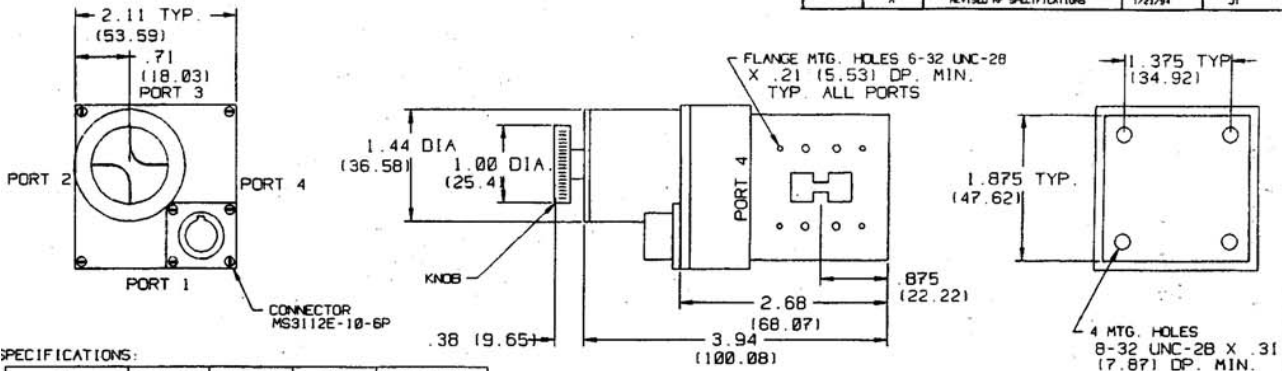
X-BAND
7.9 GHz - 8.4 GHz

Ku-BAND
14 GHz - 14.5 GHz

LOGUS covers WRD 580 with superior broadband products in both waveguide and coaxial RF's. This enables one model the versatility of meeting the application in C,X, and Ku-BAND frequencies. The following pages comprise a variety of sample models commonly used in SATCOM applications.



REVISIONS				
ECN	LTR	DESCRIPTION	DATE	APPROVED
	A	REVISED RF SPECIFICATIONS	1/28/94	JT



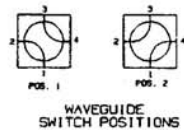
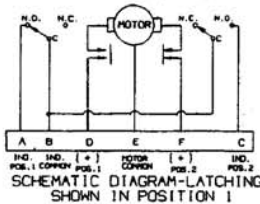
SPECIFICATIONS:

RF	C-BAND	X-BAND	Ku-BAND	BROAD BAND
FREQUENCY GHz	5.8 - 6.4	7.9 - 8.4	14.0-14.5	5.8 - 16.0
VSWR MAX.	1.18	1.18	1.15	1.18
INSERTION LOSS	0.20 db	0.05 db	0.20 db	0.20 db
ISOLATION MIN.	70 db	70 db	60 db	70 db
POWER MAX.	9.8 KW CW			

ELECTRICAL:
 VOLTAGE 28 VDC ± 10%
 CURRENT 1.00 AMP MAX. @ 20° C
 SWITCHING TIME 100 MILLISECONDS

MECHANICAL:
 MATERIAL ALUMINUM (RF ASSY.)
 DRIVE REMOVABLE MOTOR DRIVE
 ASSEMBLY GENEVA LINKAGE
 PRESSURE 10 PSIG (RF HEAD ONLY)
 FINISH IRIDITE PER MIL-C-5541
 LIFE PAINT DULL BLACK ENAMEL
 1,000,000 CYCLES

ENVIRONMENTAL:
 TEMPERATURE OPERATIVE -40°C TO +85°C
 NON-OPERATIVE -55°C TO +100°C
 HUMIDITY 0 - 95% NO CONDENSATION



UNLESS OTHERWISE SPECIFIED DIMENSIONS ARE IN INCHES		MODEL #	LOGUS MICROWAVE	
TOLERANCES		LMR580BSL23	DRAWN 1/28/94 JT	
DECIMAL	FRACTIONS	CHECKED	WAVEGUIDE SWITCH, WRD 580.	
PLACE - .118	1/32	APPROVED	DPDT. COVER, LATCHING.	
PLACE - .015	1/64	APPROVED	28 VDC, KNOB	
PLACE - .005				
ANGLES 1/2 DEG.				
MATERIAL:				
NEXT ASSY.	USED ON		B 09080 B 9853-1	
APPLICATION			SCALE	UNIT WT

LMR580BSL23

LWR580ASL25

REVISIONS				
EDN	LTR	DESCRIPTION	DATE	APPROVED

FOR ACCESS TO KNOB REMOVE 2 CAPTIVE SCREWS

COVER W/VIEWING WINDOW

FLANGE MTG. HOLES 6-32 UNC-28 X .21 (5.33) DP. MIN. TYP. ALL PORTS

1.375 TYP (34.92)

1.750 (44.28)

3.750 TYP. (95.25)

4 MTG. HOLES 8-32 UNC-28 X .31 (7.87) DP. MIN.

PORT 2

PORT 3

PORT 1

CONNECTOR MS3112E-10-6P

1.50 DIA (38.1)

.187 MAX

2.68 (68.07)

7.800 (199.08)

1.750 (44.28)

2.11 TYP. (53.59)

.71 TYP. (18.03)

BLANK WALL

BLANK WALL

POS. 1

POS. 2

WAVEGUIDE SWITCH POSITIONS

SPECIFICATIONS:

RF	C-BAND	X-BAND	KU-BAND	BROAD BAND
FREQUENCY GHz	5.8 - 6.4	7.9 - 8.4	14.8-14.5	5.8 - 16.8
VSWR MAX.	1.18 : 1	1.18 : 1	1.15 : 1	1.18 : 1
INSERTION LOSS	0.20 db	0.05 db	0.20 db	0.20 db
ISOLATION MIN.	70 db	70 db	70 db	70 db
POWER MAX.	9.8 KW CW			

ELECTRICAL:

VOLTAGE 28 VDC ± 10%

CURRENT 1.00 AMP MAX. @ 20° C

SWITCHING TIME 100 MILLISECOND

MECHANICAL:

MATERIAL ALUMINUM (RF ASSY.)

DRIVE REMOVABLE MOTOR DRIVE

ASSEMBLY GENEVA LINKAGE

PRESSURE 18 PSIG (RF HEAD ONLY)

FINISH IRIDITE PER MIL-C-5541

LIFE PAINT DULL BLACK ENAMEL

1.000.000 CYCLES

ENVIRONMENTAL:

TEMPERATURE OPERATIVE -40°C TO +85°C

NON-OPERATIVE -55°C TO +100°C

HUMIDITY 0 - 95% NO CONDENSATION

UNLESS OTHERWISE SPECIFIED DIMENSIONS ARE IN INCHES		TOLERANCES		MODEL # LWR580ASL25	
DECIMAL	FRACTIONS	DIMEN	DATE	DESIGNER	DATE
PLACE .010	1/64	APPROVED	8/4/95	Li	
PLACE .005	1/32	APPROVED	8/4/95	M.P.	
ANGLES 1/2 DEG.		APPROVED			

WAVEGUIDE SWITCH WRD-580 SPDT. COVER, LATCHING. SEE THRU WEATHERIZED CAP

SCALE UNIT MT SHEET 1 OF 1

MMDMR580BSI 94

REVISIONS				
EDN	LTR	DESCRIPTION	DATE	APPROVED

71 TYP. (18.03)

PORT 3

PORT 2

PORT 4

PORT 1

CONNECTOR MS3112E-10-6P

1.44 DIA (36.57)

KNOB

FLANGE MTG. HOLES 6-32 UNC-28 X .21 (5.33) DP. MIN. TYP. ALL PORTS

1.60 TYP. (40.64)

1.875 TYP. (47.62)

.1875 (47.62)

1.650 TYP. (41.91)

4 MTG. HOLES 6-32 UNC-28 X .31 (7.87) DP. MIN.

TYPE 'SMA' CONN.

75 (19.05)

4.11 MAX. (104.39)

1.44 DIA (36.57)

1.60 TYP. (40.64)

1.875 TYP. (47.62)

1.650 TYP. (41.91)

WAVEGUIDE SWITCH POSITIONS

COAXIAL SWITCH POSITIONS

SPECIFICATIONS:

RF	C-BAND	X-BAND	KU-BAND	COAXIAL
FREQUENCY GHz	5.8 - 6.4	7.9 - 8.4	14.8-14.5	5.8 - 16.8
VSWR MAX.	1.18 : 1	1.18 : 1	1.15 : 1	1.3 : 1
INSERTION LOSS	0.20 db	0.05 db	0.20 db	0.40 db
ISOLATION MIN.	70 db	70 db	70 db	60 db
POWER MAX.	9.8 KW CW			

ELECTRICAL:

VOLTAGE 15 VDC ± OR - 10%

CURRENT 1.5 AMPS MAX. @ 20 DEG. C

SWITCHING TIME 80 MILLISECOND

MECHANICAL:

MATERIAL ALUMINUM (RF ASSY.)

DRIVE REMOVABLE MOTOR DRIVE

ASSEMBLY GENEVA LINKAGE

PRESSURE 30 PSIG (RF HEAD ONLY)

FINISH IRIDITE PER MIL-C-5541

LIFE PAINT DULL BLACK ENAMEL

1.000.000 CYCLES

ENVIRONMENTAL:

TEMPERATURE OPERATIVE -40°C TO +85°C

NON-OPERATIVE -55°C TO +100°C

HUMIDITY 0-95% NO CONDENSATION

UNLESS OTHERWISE SPECIFIED DIMENSIONS ARE IN INCHES		TOLERANCES		MODEL # MMDMR580BSI 94	
DECIMAL	FRACTIONS	DIMEN	DATE	DESIGNER	DATE
PLACE .010	1/64	APPROVED	9/16/95	Li	
PLACE .005	1/32	APPROVED			
ANGLES 1/2 DEG.		APPROVED			

DUAL WAVEGUIDE/COAXIAL SWITCH WRD 580/SMA. XFR. LATCHING. COVER, SPDT. W/KNOB

SCALE UNIT MT SHEET 1 OF 1